



Swedish Anna Towels



Swedish 8/2 cotton threads make these towels beautiful as well as absorbent and easy to care for.

The pre-wound warp threads makes this kit easy to use.

Swedish 8/2 white cotton is included for weft to complete four towels.

You will need two, four or eight shafts, 12 dent reed, 20 inches weaving width and 456 heddles.

Swedish Anna towels are approx 17 x 24 inches, 19" warp width.

There is enough blue and yellow weft to weave hems or weft stripes on one towel.

Warp ends/inch): 24
of threads in a heddle: 1
of bouts (chains): 2
Finished width: 16-17 inches

Warp length: 4 yds
of threads in a dent: 2
of threads in each bout (chain): 228
Wefts/inch, plain weave: 18 Twill: 24

Warp Color Order

12 natural,
12 yellow,
72 natural,
12 blue,
12 yellow,
12 blue,
72 natural,
12 yellow,
12 natural,
228 total

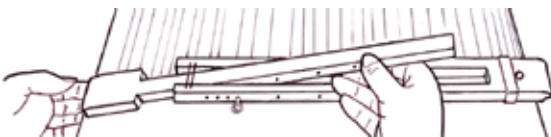
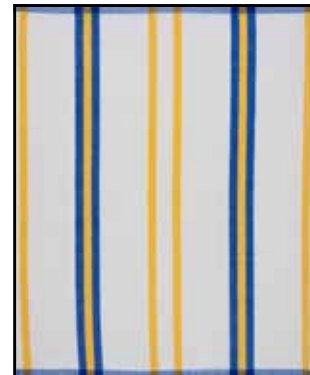
Threading

Instructions on page 2 include plain, twill or broken twill. For the more adventuresome weavers, there is an 8 shaft broken twill threading, page4.

Back to front warping information:

To pre-sley your 12 dent reed, put 6 threads in a dent and skip two dents.

If you use a raddle with 1/2 in spaces, put 12 threads in each space, 24 threads if you have 1 in spaces.



We recommend that you use a 16-22 inch temple.
For more information about using a temple, see page 3.

If you have questions or need help, call or write:
info@glimakraUSA.com or toll free 866 890 7314

For more information about this kit, other weaving kits by Joanne Hall
ask at the shop where you purchased this kit.

To thread and weave the towels:

Select plain weave or one of the other weaves below.

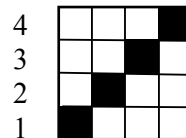
1. Weave 1 in hem. Weave it in the selected weave.
2. Weave approximately 18 wefts per inch for plain weave, 24 for twill.
3. Weave the towel 24 inches long.
4. Weave 1 in hem.
5. Weave one thread of a different color to mark a cutting line, then start the second towel.

Plain Weave

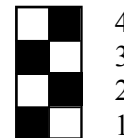
Plain weave is good for beginners and for weaving the first towel.



Plain weave
threading draft



Treadle
Tie-up



Treadling
draft



Twill

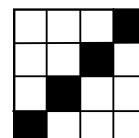
Table loom treadling for twill:

1&2, 1&4, 3&4, 2&3,

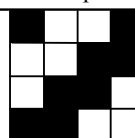
Weave approx 24 wefts per inch. Use the same treadling for hems. If a selvage thread is not being caught after weaving four wefts, unweave these four wefts and begin on the opposite side. If you still do not catch the selvage warp thread, remove this thread and let it hang off the back of the loom. When changing colors, start the new weft in the same direction of the previous weft.



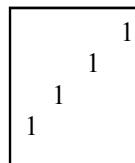
Twill threading draft



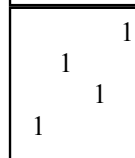
Treadle
Tie-up



Twill
Treadling



Broken
Twill
Treadling



Broken Twill

Table loom treadling for broken twill: 1&2, 3&4, 4&1, 2&3

Use the same treadling for hems.

Herringbone or Goose eye for more advanced weavers

Herringbone

A floating selvage is not needed for weaving the herringbone. If a selvage thread is not being caught, simply cut off the thread. It is helpful to use a floating selvage when weaving the goose eye. To do this, take the first and last threads of your warp out of their heddles before you tie up the warp threads. To weave, enter the shuttle above the floating selvage and exit below.

Table loom treadling for herringbone 1&2, 4&1, 3&4, 2&3

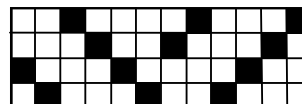
Table loom treadling for goose eye:

1&2, 4&1, 3&4, 2&3, 1&2, 1&4,
2&3, 3&4, 4&1, 1&2, 2&3, 3&4,

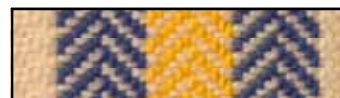
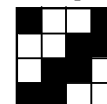
Finishing your towels

Wash your towels in your washing machine using warm or hot water. Air dry or use your dryer. Expect shrinkage in length of 10-12 %, or about 2 1/2" in length.

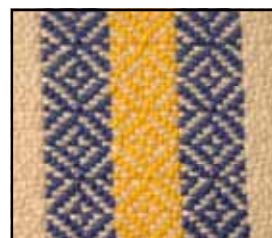
Herringbone threading draft



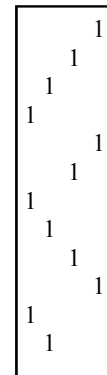
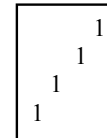
Treadle
Tie-up



herringbone



goose eye



Towels in Eight Shaft Weave

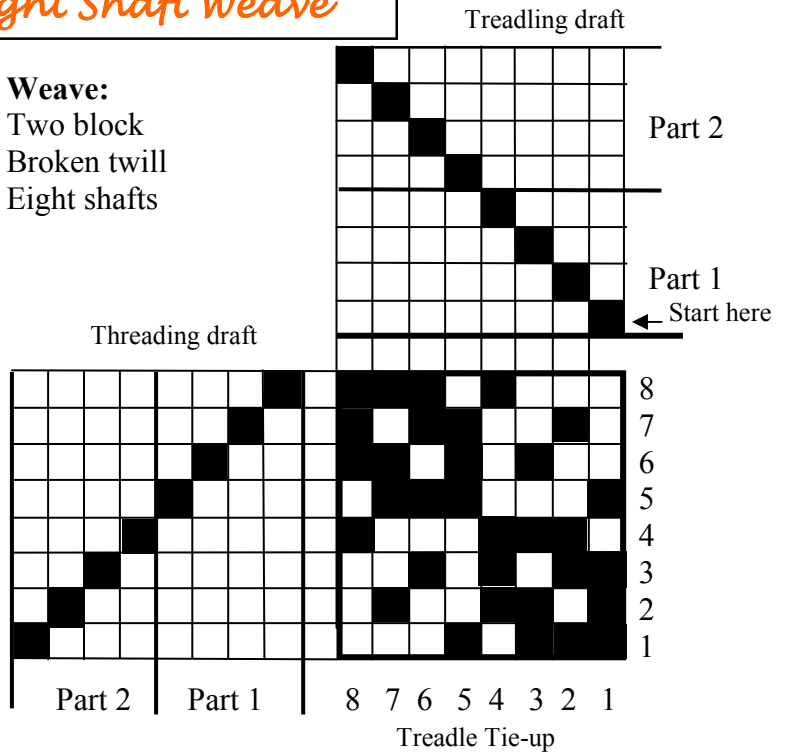
Threading Instructions

Part 1 and part 2 are threaded alternately. Each part is threaded 2 to 6 times, as follows:

Part	# of times to thread	color
1	1 time	natural
2	2	natural
1	3	yellow
2	6	natural
1	6	natural
2	6	natural
1	3	blue
2	3	yellow
1	3	blue
2	6	natural
1	6	natural
2	6	natural
1	3	yellow
1	6	natural

Center, reverse, do not repeat the natural center.

Weave:
Two block
Broken twill
Eight shafts



Four Treadle Weave

Weave with only the four treadles of Part 1

To weave the first towel

1. Select a treadling, either using four treadles or using all eight.
2. Weave 1 in hem in your selected treadling.
3. Weave the towel 24 inches long.
4. Weave 1 in hem.

A floating selvage is not needed for weaving.



Eight treadle weave

Treadle:
Alternate parts 1 & 2

Part 1, repeat 6 times
Part 2, repeat 2 times



This Weaving Kit designed by Joanne Hall,
www.glimakraUSA.com
For more information about this kit, other weaving kits by Joanne Hall or
if you want information about Glimakra weaving equipment,
ask at the shop where you purchased this kit.

Anna towel kit

This kit will make four towels, 17" x 24". You will need 20 inches weaving width and 456 heddles. Instructions include threadings for plain weave, twill, broken twill or you can choose another threading to give you herringbone or goose eye patterns. There is also an 8 shaft threading to choose from.

To purchase this kit with the warp wound, ready to put on your loom **contact us**

To purchase this kit without the wound warp, you can choose the colors you want for the stripes. Instructions included:

1 tube unbleached 8/2 Cotton

1 tube 8/2 Cotton, white, 1

1 tube 8/2 Cotton, yellow 1

1 tube 8/2 Cotton, blue,

Instructions included. You will have some yellow, white and blue left over.

If you purchase an extra tube of unbleached and an extra tube of white, you can make an 8 yard warp and weave 8 towels. If you prefer, you can select different colors for the stripes.